
LumCAT: 2-1682-M
Luminaire: 92.70.124.00
Report No: NATA0100
Test No: GC2019062814
LampCAT: TRIDONIC SLE 9MM G7
Lamp flux(lm): 1073.0
Number of Lamps: 1
Length(mm): 70
Phm Type: C

Voltage(V): 34.8500
Current(A): 0.2490
Power (W): 8.6780
PF: 0.0000
Ballast type: DC
Width(mm): 70
Height(mm): 0

Photometric Results

Lumens(lm): 966.75
Efficiency(%): 90.10%
Lumens(lm)/Power(W): 111.40
Central intensity(cd): 2076.047
Maximum intensity(cd): 2076.047
Angle of maximum intensity: C=0.0 γ =0.0
Beam Angle(50%Imax): [C0/180]Total=35.7
 [C90/270]Total=35.7
Field angle(10%Imax): [C0/180]Total=70.7
 [C90/270]Total=70.7
Maximum s/h(1/2): C0_180=0.57 C90_270=0.57
Maximum s/h(1/4): C0_180=0.61 C90_270=0.61
Up flux rate of lamp(%): 0.00%
Down flux rate of lamp(%): 90.10%
Up flux rate of LUM(%): - -
Down flux rate of LUM(%): 100.00%
CIE Type : Direct lighting
Output flux ratio in π solid angle : 98.682%

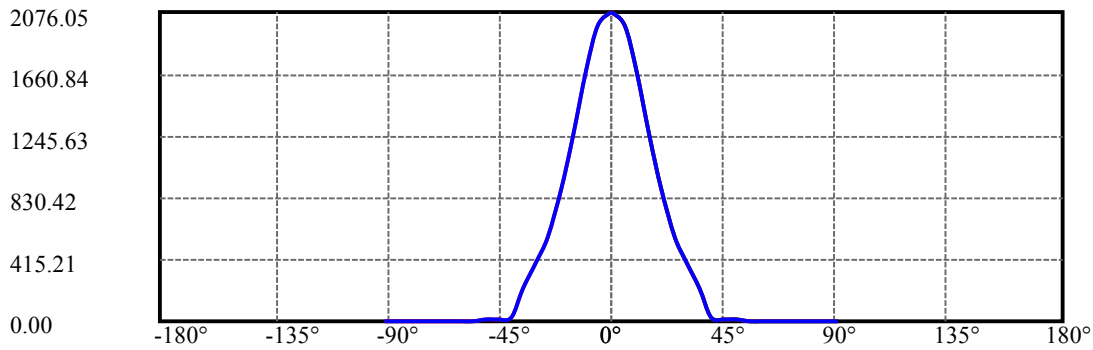
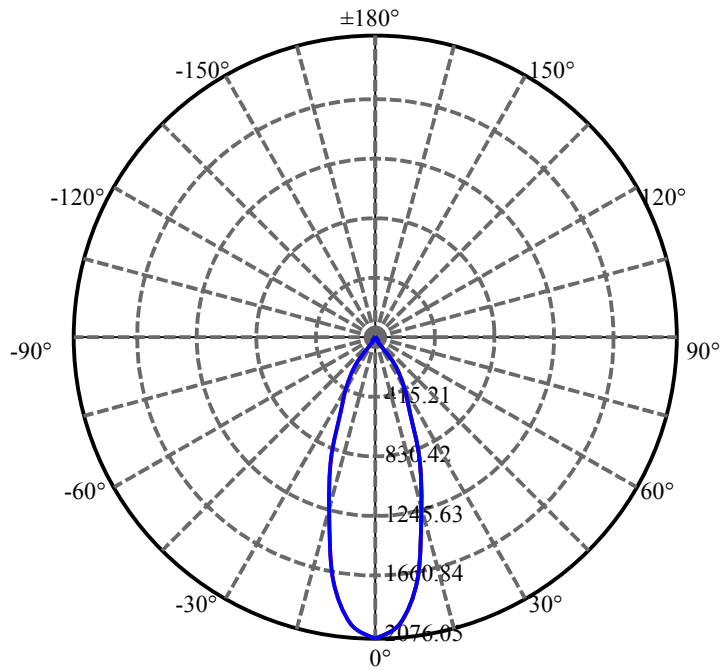
$\gamma(^{\circ})$	Average I(cd)	Zonal F(lm)	Sum F(lm)	Eff Flux(%)	Eff Sum(%)
0.0	2076.047	0.000	0	.000%	.000%
5.0	1983.164	48.527	48.527	4.523%	5.020%
10.0	1693.055	131.510	180.037	12.256%	18.623%
15.0	1234.807	173.679	353.715	16.186%	36.588%
20.0	891.415	175.231	528.946	16.331%	54.714%
25.0	568.252	153.092	682.038	14.268%	70.550%
30.0	400.324	122.574	804.612	11.423%	83.229%
35.0	222.145	91.663	896.275	8.543%	92.710%
40.0	28.111	41.753	938.028	3.891%	97.029%
45.0	9.689	6.999	945.027	.652%	97.753%
50.0	7.523	3.478	948.505	.324%	98.113%
55.0	6.026	2.946	951.452	.275%	98.418%
60.0	5.041	2.558	954.01	.238%	98.682%
65.0	4.359	2.285	956.295	.213%	98.919%
70.0	4.022	2.122	958.417	.198%	99.138%
75.0	3.860	2.060	960.477	.192%	99.351%
80.0	3.860	2.066	962.543	.193%	99.565%
85.0	3.860	2.098	964.641	.196%	99.782%
90.0	3.839	2.108	966.749	.196%	100.000%

ZONAL LUMEN SUMMARY

Zone	Lumens	%Lamp	%Fixt
0-30	804.61	74.99%	83.23%
0-40	938.03	87.42%	97.03%
0-60	954.01	88.91%	98.68%
0-90	964.64	89.90%	99.78%
0-120	964.64	89.90%	99.78%
0-180	966.75	90.10%	100.00%
60-90	13.19	1.23%	1.36%
90-120	0.00	0.00%	0.00%
90-130	0.00	0.00%	0.00%
90-150	0.00	0.00%	0.00%
90-180	0.00	0.00%	0.00%
0-28.73	773.40	72.08%	80.00%

ZONAL LUMEN SUMMARY

0-10	180.04
10-20	348.91
20-30	275.67
30-40	133.42
40-50	10.48
50-60	5.50
60-70	4.41
70-80	4.13
80-90	2.10
90-100	0.00
100-110	0.00
110-120	0.00
120-130	0.00
130-140	0.00
140-150	0.00
150-160	0.00
160-170	0.00
170-180	0.00



C0(Max): —————

C0/C180: —————

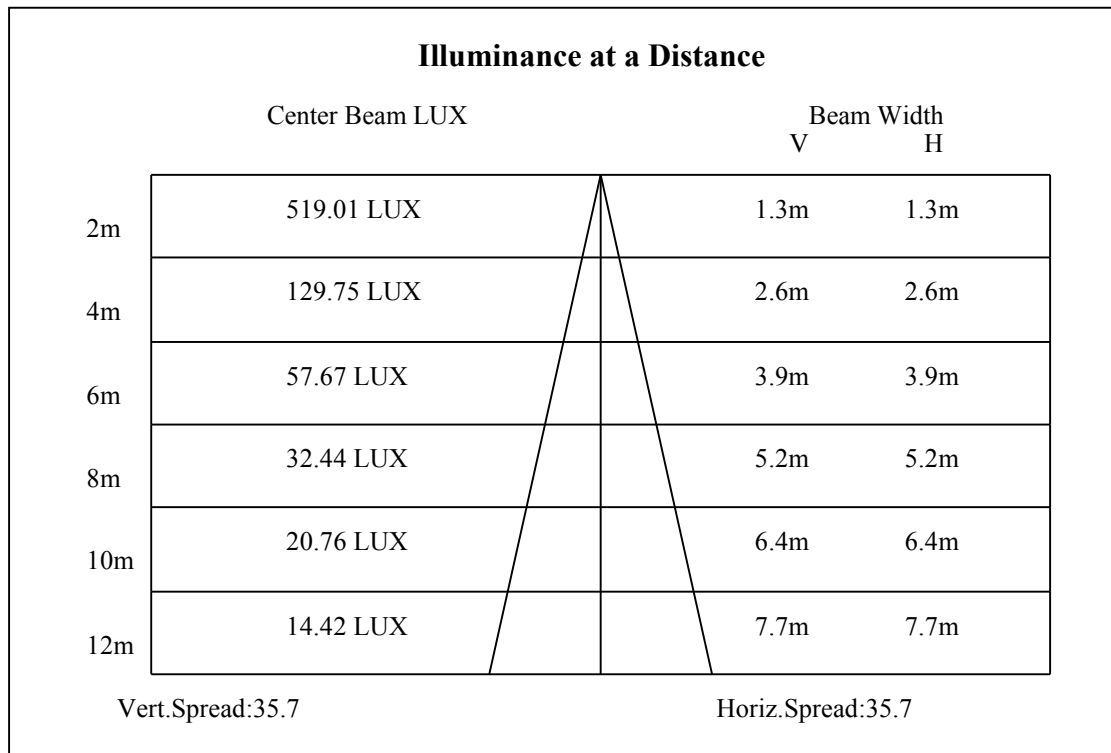
C90/C270: —————

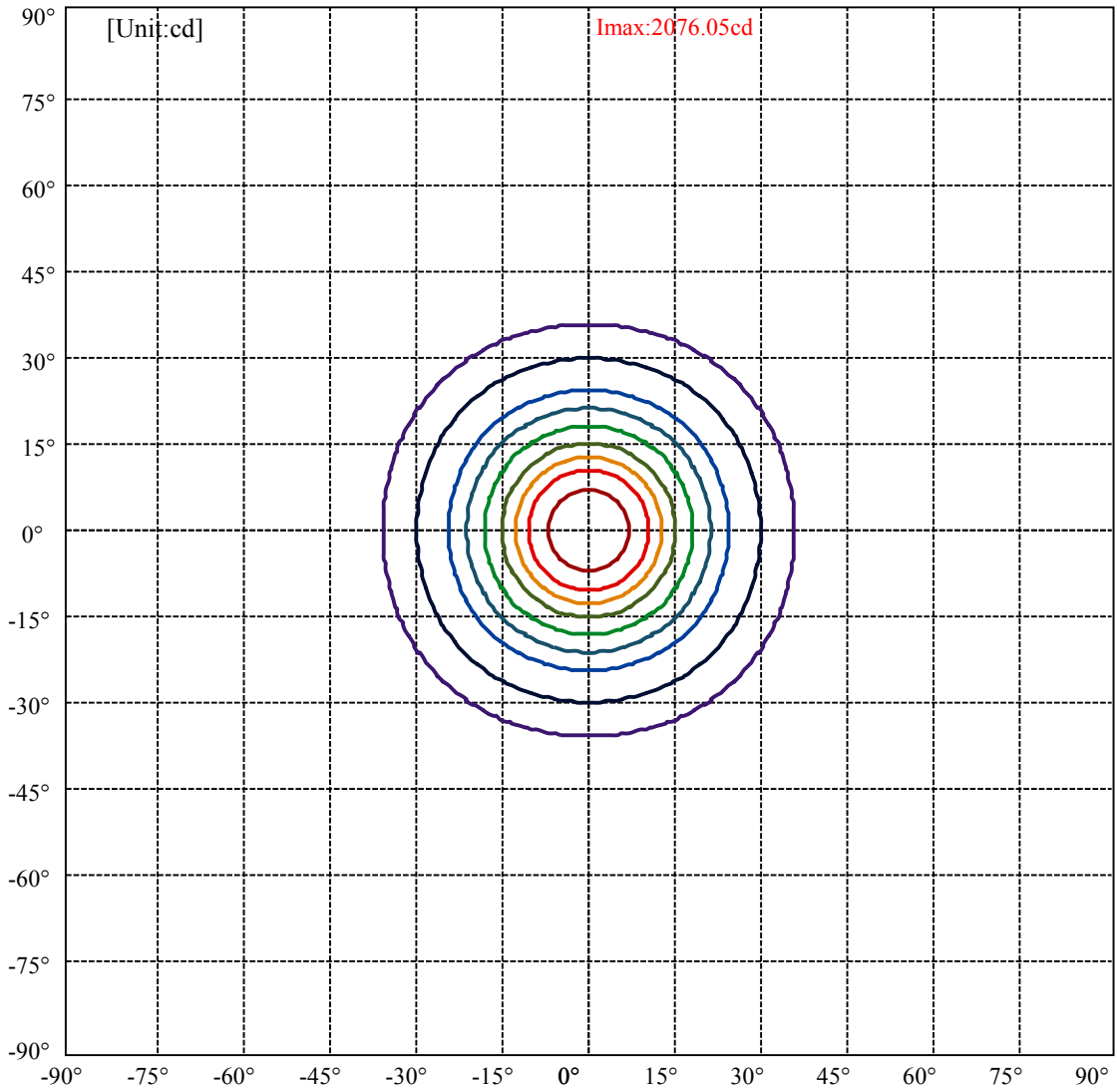
Field angle(10%Imax):C0/180Left:35.4 Right:35.4

:C90/270Left:35.4 Right:35.4

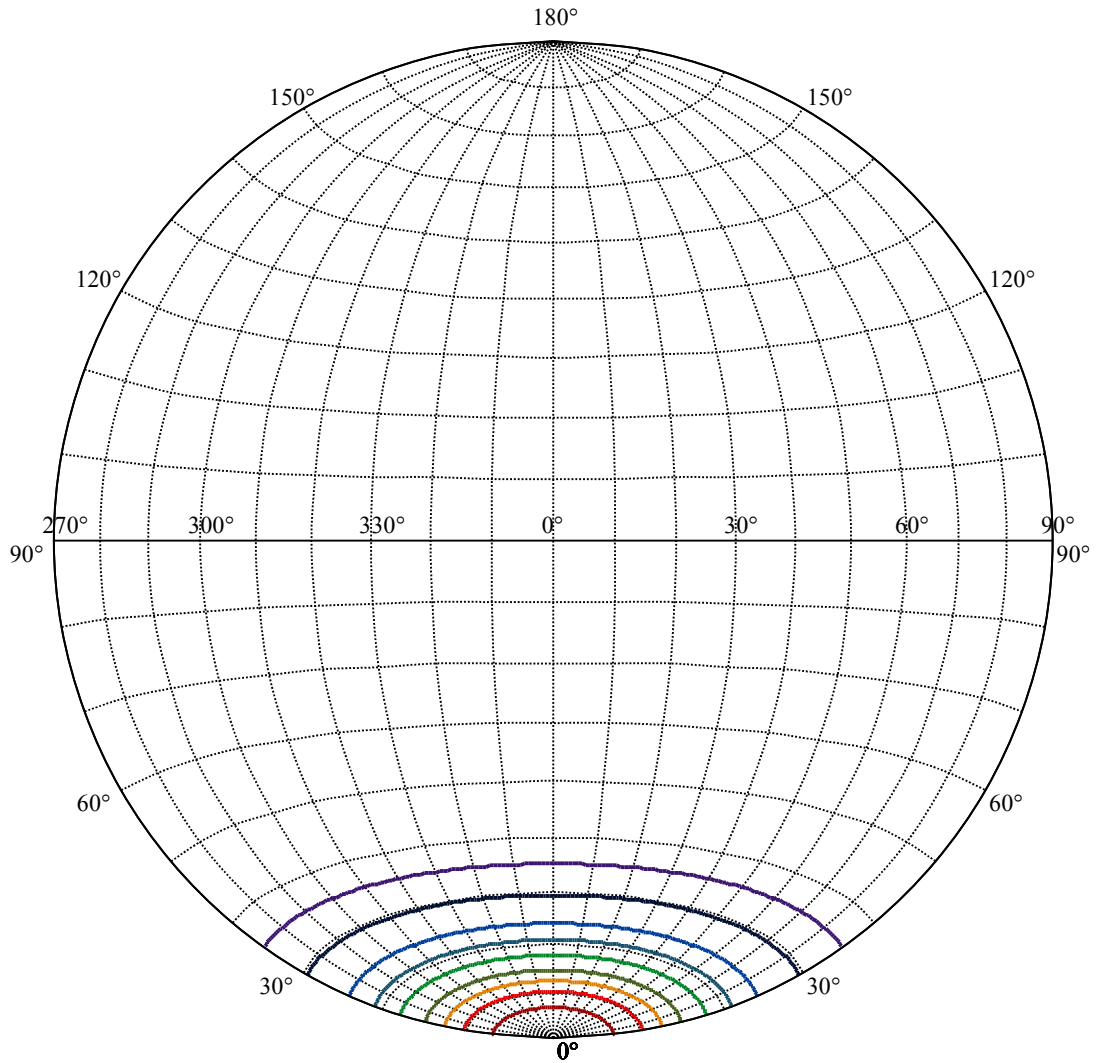
Beam Angle(50%Imax):C0/180Left:17.9 Right:17.9

:C90/270Left:17.9 Right:17.9





(10%Imax) 207.605	—
(20%Imax) 415.209	—
(30%Imax) 622.814	—
(40%Imax) 830.419	—
(50%Imax) 1038.02	—
(60%Imax) 1245.63	—
(70%Imax) 1453.23	—
(80%Imax) 1660.84	—
(90%Imax) 1868.44	—



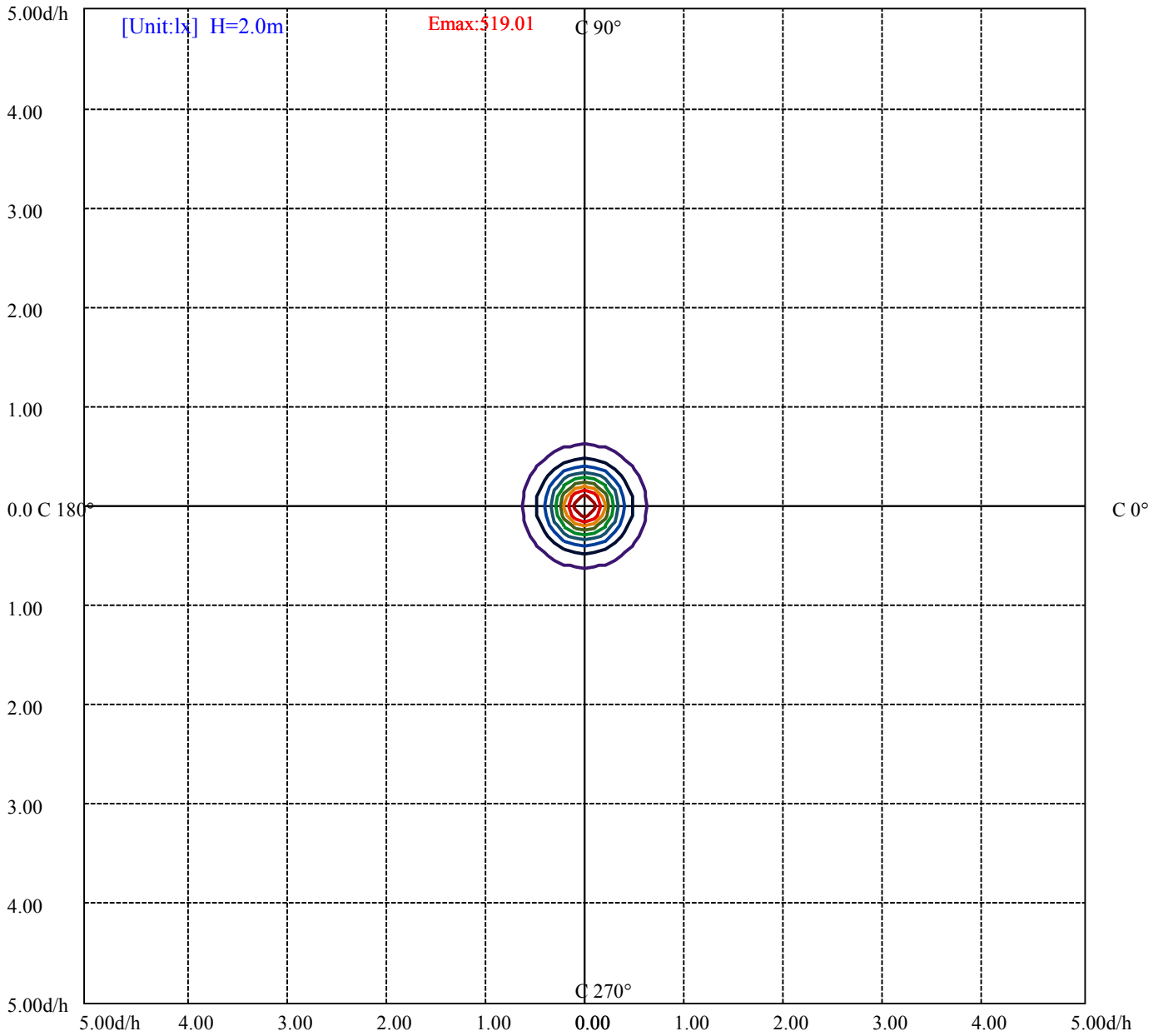
House

[Unit:cd]

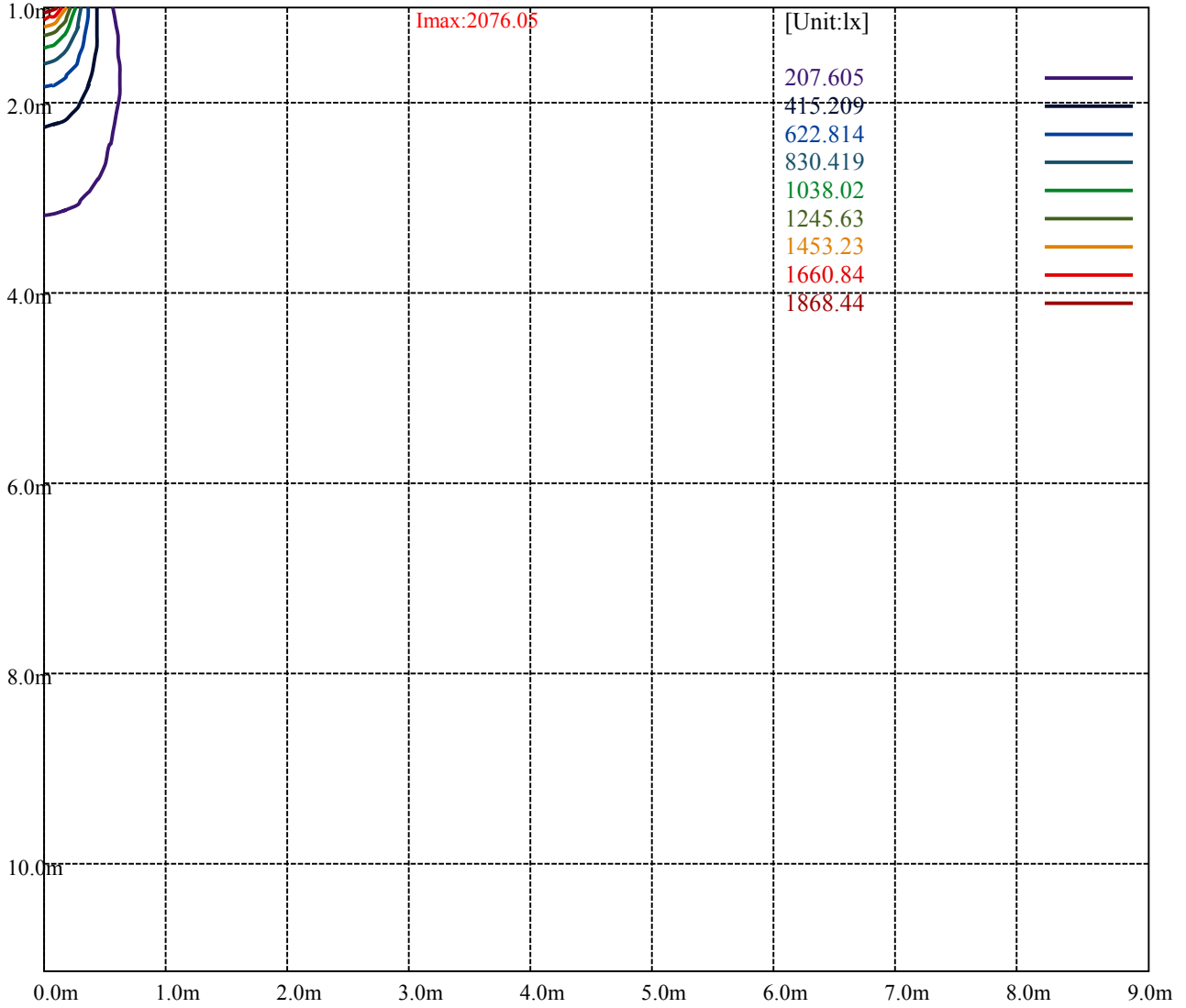
Road

Imax:2076.05

(10%Imax)	207.605	—
(20%Imax)	415.209	—
(30%Imax)	622.814	—
(40%Imax)	830.419	—
(50%Imax)	1038.02	—
(60%Imax)	1245.63	—
(70%Imax)	1453.23	—
(80%Imax)	1660.84	—
(90%Imax)	1868.44	—



(10%Emax) 51.901	—
(20%Emax) 103.8023	—
(30%Emax) 155.7032	—
(40%Emax) 207.6045	—
(50%Emax) 259.505	—
(60%Emax) 311.4075	—
(70%Emax) 363.3075	—
(80%Emax) 415.21	—
(90%Emax) 467.11	—



Luminance Table

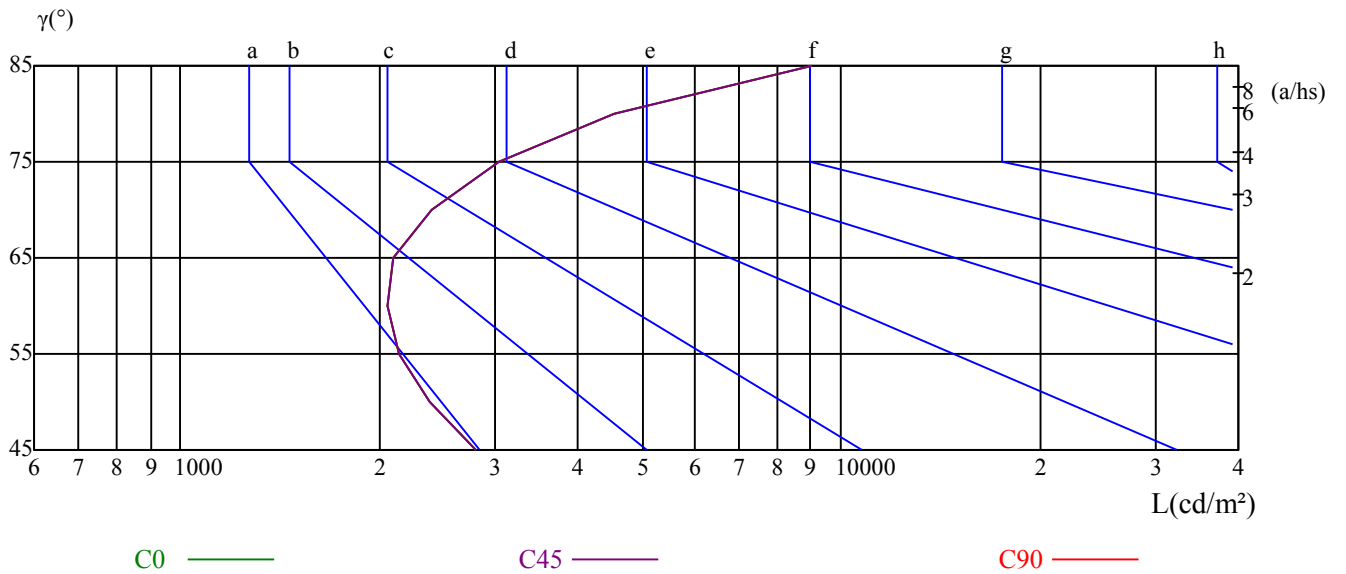
γ	45	50	55	60	65	70	75	80	85
C0	2796	2389	2144	2058	2105	2400	3044	4537	9039
C45	2796	2389	2144	2058	2105	2400	3044	4537	9039
C90	2796	2389	2144	2058	2105	2400	3044	4537	9039

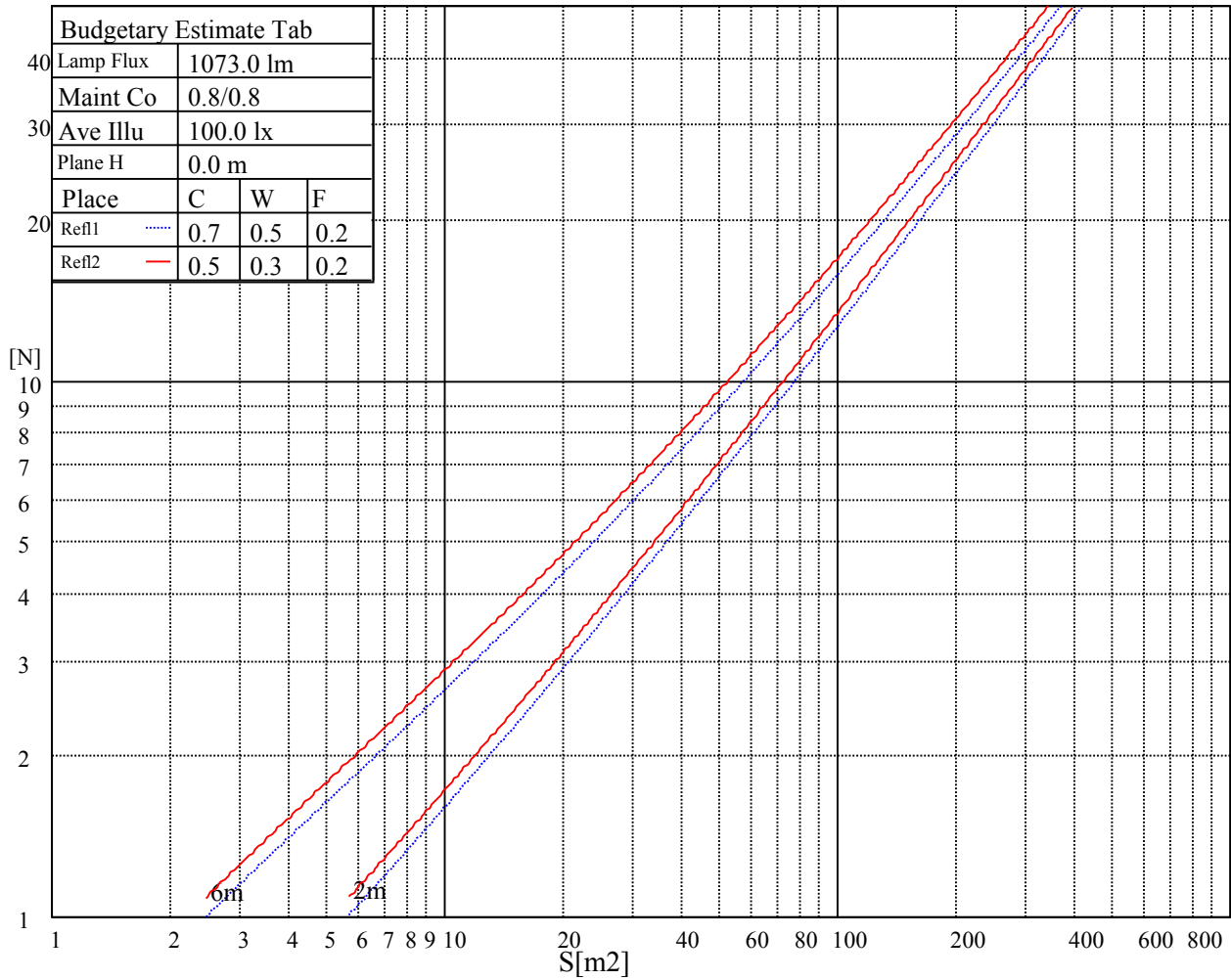
L(Hor)(65)	L(Ver)(65)	L45(65)	L(Hor)(75)	L(Ver)(75)	L45(75)	L(Hor)(85)	L(Ver)(85)	L45(85)
2105	2105	2105	3044	3044	3044	9039	9039	9039

Glare Table

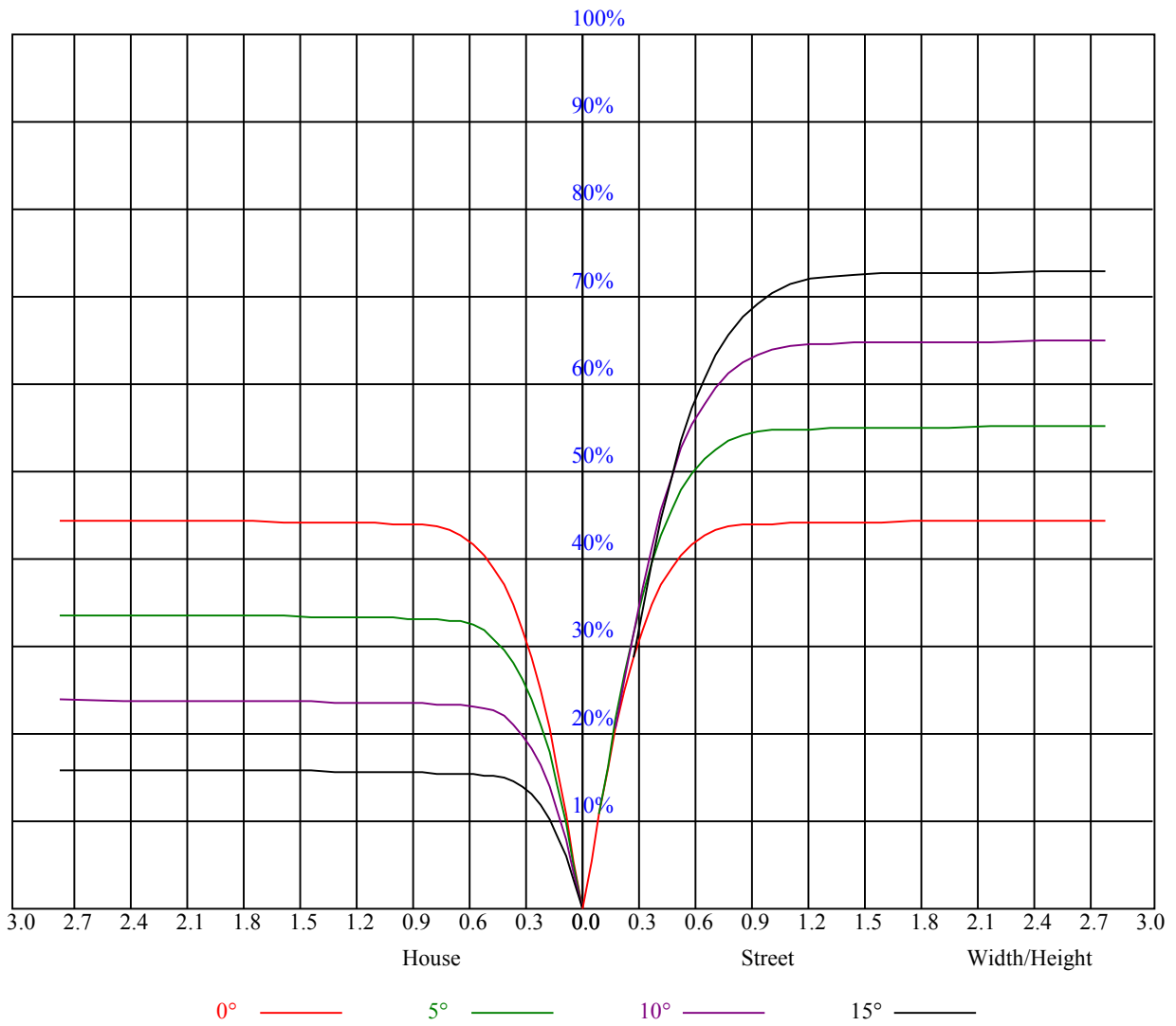
Glare	Quality	Service Values Illuminance(lx)							
1.15	A	2000	1000	500	<=300				
1.5	B		2000	1000	500	<=300			
1.85	C			2000	1000	500	<=300		
2.2	D				2000	1000	500	<=300	
2.55	E					2000	1000	500	<=300
		a	b	c	d	e	f	g	h

Luminance Limiting Curve





RHOCC	80			70			50			30			10			0
RHOW	50	30	10	50	30	10	50	30	10	50	30	10	50	30	10	0
RCR	COEFFICIENTS OF UTILIZATION RHOFC=20 CU															
0	1.07	1.07	1.07	1.05	1.05	1.05	1.00	1.00	1.00	0.96	0.96	0.96	0.92	0.92	0.92	0.90
1	1.00	0.98	0.96	0.98	0.97	0.95	0.95	0.93	0.92	0.91	0.90	0.89	0.88	0.87	0.87	0.85
2	0.94	0.91	0.88	0.93	0.90	0.87	0.90	0.87	0.85	0.87	0.85	0.83	0.85	0.83	0.82	0.80
3	0.89	0.85	0.82	0.88	0.84	0.81	0.85	0.82	0.80	0.83	0.81	0.79	0.81	0.79	0.77	0.76
4	0.84	0.80	0.76	0.83	0.79	0.76	0.81	0.78	0.75	0.79	0.77	0.74	0.78	0.75	0.73	0.72
5	0.80	0.75	0.72	0.79	0.75	0.71	0.77	0.74	0.71	0.76	0.73	0.70	0.75	0.72	0.70	0.68
6	0.76	0.71	0.68	0.75	0.71	0.67	0.74	0.70	0.67	0.73	0.69	0.67	0.72	0.69	0.66	0.65
7	0.72	0.67	0.64	0.72	0.67	0.64	0.71	0.67	0.64	0.70	0.66	0.63	0.69	0.65	0.63	0.62
8	0.69	0.64	0.61	0.68	0.64	0.61	0.68	0.63	0.61	0.67	0.63	0.60	0.66	0.63	0.60	0.59
9	0.66	0.61	0.58	0.65	0.61	0.58	0.65	0.61	0.58	0.64	0.60	0.58	0.63	0.60	0.57	0.56
10	0.63	0.59	0.55	0.63	0.58	0.55	0.62	0.58	0.55	0.61	0.58	0.55	0.61	0.57	0.55	0.54



Intensity data(cd)

C/ γ (°)	0.0	5.0	10.0	15.0	20.0	25.0	30.0	35.0	40.0
0.0	2070.56	2004.19	1726.31	1334.81	954.00	588.94	413.44	289.69	35.16
45.0	2080.13	1991.25	1724.06	1324.13	909.56	569.81	409.50	235.80	30.94
90.0	2073.94	1962.00	1649.81	1109.59	825.36	548.38	385.37	162.17	25.59
135.0	2079.56	1999.69	1747.69	1333.13	936.00	623.81	421.31	296.44	37.91
180.0	2070.56	1969.88	1666.13	1224.00	869.51	543.99	378.34	170.33	21.71
225.0	2080.13	1971.00	1669.50	1108.18	865.52	556.82	393.41	173.03	21.60
270.0	2073.94	1997.44	1704.94	1337.63	927.56	585.00	417.38	286.31	31.16
315.0	2079.56	1969.88	1656.00	1107.00	843.81	529.26	383.85	163.41	20.81
360.0	2070.56	2004.19	1726.31	1334.81	954.00	588.94	413.44	289.69	35.16
C/ γ (°)	45.0	50.0	55.0	60.0	65.0	70.0	75.0	80.0	85.0
0.0	10.46	8.16	6.47	5.29	4.44	4.05	3.83	3.83	3.83
45.0	9.96	7.71	6.13	5.12	4.44	4.05	3.88	3.88	3.88
90.0	9.73	7.43	5.96	4.95	4.33	3.99	3.88	3.94	3.88
135.0	9.84	7.59	6.02	5.06	4.33	4.05	3.88	3.83	3.83
180.0	8.55	6.92	5.63	4.78	4.28	3.94	3.83	3.83	3.83
225.0	9.45	7.43	5.96	4.95	4.33	3.99	3.88	3.88	3.88
270.0	9.79	7.65	6.13	5.18	4.39	4.11	3.88	3.88	3.94
315.0	9.73	7.31	5.91	5.01	4.33	3.99	3.83	3.83	3.83
360.0	10.46	8.16	6.47	5.29	4.44	4.05	3.83	3.83	3.83
C/ γ (°)	90.0								
0.0	3.83								
45.0	3.88								
90.0	3.83								
135.0	3.83								
180.0	3.83								
225.0	3.88								
270.0	3.83								
315.0	3.83								
360.0	3.83								